



**BENJAMIN
STEVENS.**
estate agents



Elizabeth Grove, Bushey Heath WD23 1XB

Asking Price £975,000

A beautifully presented bright and spacious TWO DOUBLE BEDROOM, TWO BATHROOM PENTHOUSE APARTMENT forming part of the exclusive private gated development Heathbourne Village in the heart of Bushey Heath, conveniently located and within walking distance to all local shopping and transport facilities. The property is being offered in excellent decorative order and benefits from: Video Entryphone System, Lift Access, Underfloor Heating, Sonos Speaker System, Reception Room With Fully Fitted Open Plan Kitchen Diner & Bifold Doors Leading Onto Two Balconies, Bedroom One With En Suite Dressing Room & Shower Room, Bedroom Two With Full Range Of Fitted Wardrobes, Family Bathroom, Communal Grounds, Allocated Parking For Two Cars With Fitting For Electric Charging Point.

LONG LEASE - CHAIN FREE

Elizabeth Grove, Bushey Heath WD23 1XB

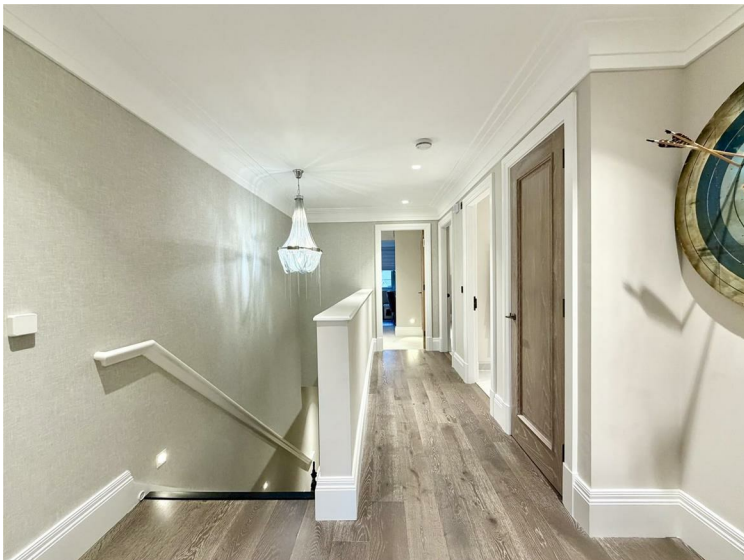
Exterior:



Open Plan Kitchen/Diner:



Entrance Hall:



Open Plan Kitchen/Diner:



Entrance Hall:



Open Plan Kitchen/Diner:



Elizabeth Grove, Bushey Heath WD23 1XB

Living Room:



Bedroom One:



Living Room:



Bedroom One:



Living Room:



Bedroom One:



Elizabeth Grove, Bushey Heath WD23 1XB

En Suite Dressing Room:



Bedroom Two:



En Suite Shower Room:



Family Bathroom:



En Suite Shower Room:



Communal Grounds:



Elizabeth Grove, Bushey Heath WD23 1XB

Tenure:

This property is share of the freehold

Lease: Approximately 995 years remaining.

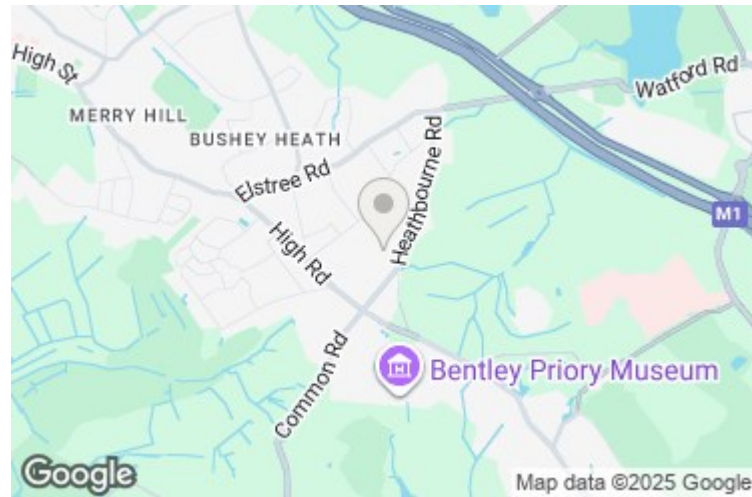
Service Charge: Approximately £5,000 PA

Council Tax Band: G Hertsmere

NB: There are no pets allowed in the property and is owner occupier only

Disclaimer:

While every care and effort has been made to ensure these details are correct their accuracy cannot be guaranteed and so should not form part of any contract.

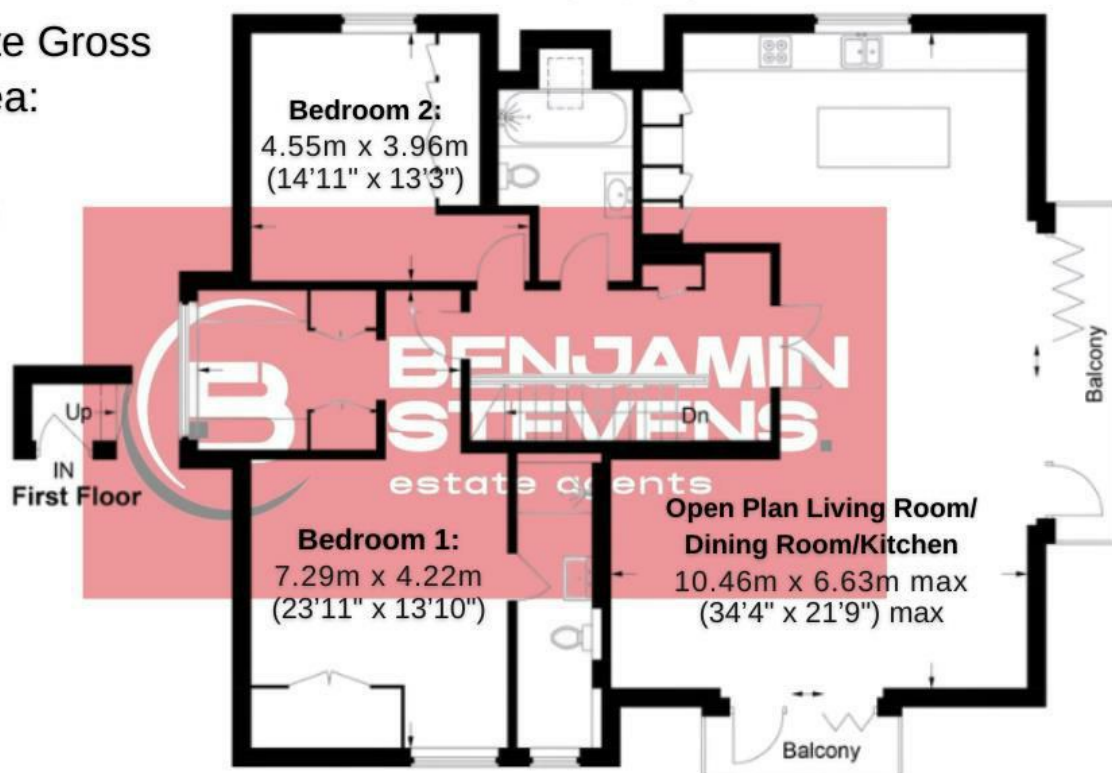


Elizabeth Grove, Bushey Heath, WD23

Approximate Gross
Internal Area:

1488 sq ft

138.3 sq m



Whilst every attempt has been made to ensure the accuracy of the floorplan contained here, measurements of doors, windows, rooms and any other items are approximate and no responsibility is taken for any error, omission or mis-statement. This plan is for illustrative purposes only and should be used as such by any prospective purchaser. The services, systems and appliances shown have not been tested and no guarantee as to their operability or efficiency can be given.

